

alcoa



Aluminium
for the world

Product Brochure

Pioneering the 'Metal of The Future'



Contents

04	•	CEO Message
05	•	CMO Message
07	•	Our Company
08	•	High-Quality Products
09	•	Customer Technical Support
10	•	Product Portfolio
		Billets
		Rolling Ingots (Slabs)
		Foundry Alloy Ingots
		Liquid Metal and Primary Ingots
16	•	Alba's EternAl for Global Markets
20	•	Our Certifications
21	•	Alba's Marketing Management Team



Message from the CEO ALI AL BAQALI



Shaping a Sustainable Tomorrow

As we embark on our 54th year of operations, I extend a heartfelt thank you to our loyal customers who have been with Alba for more than five decades. Together, we have delivered, and I also look forward to welcome new partners to join Alba's growing portfolio.

Alba's legacy is built on more than five decades of expertise, a dynamic workforce, relentless pursuit of operational excellence, and commitment to Safety and ESG. We're proud to inspire other industries in Bahrain and pave the way for a more sustainable future. As a responsible company, we remain dedicated to creating value in everything we do.

Communicating what we do is what makes us strong. We Don't Just Do It, We Communicate It and our ESG report reflects our commitment to what truly matters (learn more about Alba's ESG journey on our website www.albasmelter.com).

At Alba, we believe in driving positive change through strong partnerships with our customers to build a more sustainable future.



“
We Don't Just Do It, We
Communicate It: Driving
Change Through Open
Dialogue With Our
Partners.”

Message from the CMO HISHAM ALKOOHEJI



Welcome to the World of Alba: Your Trusted Aluminium Partner

We're thrilled to unveil our new product brochure, showcasing the diverse product-portfolio we offer.

For over 50 years, Alba has built strong relationships with customers worldwide, earning a reputation as a reliable supplier across more than 50 countries. Our commitment extends beyond products – we're dedicated to delivering real value to your business.

Imagine the possibilities: From beverage cans and automotive parts to air conditioning units and building materials, our high-quality aluminium is used in countless applications.

Unwavering Reliability: At Alba, we operate 24/7 with safety at the forefront of everything we do. Our robust logistics network ensures timely deliveries, wherever you are.

Partnering for Success: Your success is our success. That's why we go the extra mile to build long-lasting partnerships based on trust and collaboration.



“
We're dedicated to
delivering real value to
your business.”



Our Company

At plus-1.62 million metric tonnes per annum (mtpa) (2024), Alba is a world-leading aluminium smelter with a proud 50-year legacy in operational excellence, safety, environmental responsibility, and community development.

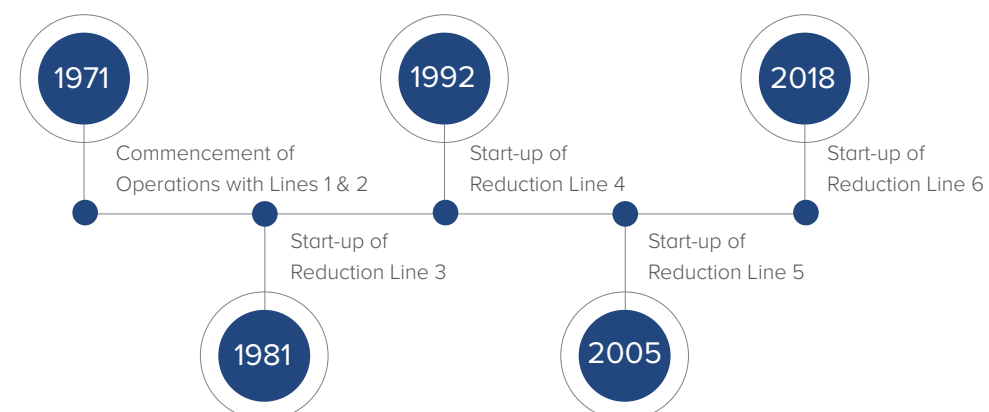
A cornerstone of the Bahrain's economy, Alba produces high-quality aluminium, including standard and value-added products, which are exported to over 280 customers globally. With sales' offices in Europe (Zurich), Asia (Singapore), and a subsidiary in the U.S., Alba is a reliable partner on the world stage. Alba is dually listed on Bahrain Bourse and London Stock Exchange and its shareholders are Bahrain Mumtalakat Holding Company B.S.C. © (69.38%), Saudi Arabian Mining Company (Ma'aden) (20.62%) and General Public (10%). Alba prioritises the highest quality standards, reflected in its certifications: ISO 9001 (quality), ISO 14001 (environment), ISO 27001 (information security), ISO 45001 (occupational health and safety), and ISO 18788 (security operations management). Additionally, Alba demonstrates its commitment to responsible manufacturing through certifications like IATF 16949 (automotive quality), ISO 22301 (business continuity), and ASI Performance and Chain of Custody Standards. This dedication is further underscored by their top 1% Ecovadis Platinum rating for sustainability.

As the first aluminium smelter in the Middle East, Alba is central to Bahrain's thriving downstream aluminium sector, contributing significantly to the Kingdom's GDP. Committed to social responsibility, Alba employs a workforce that is 87% Bahrainis (2024) and invests heavily in employee training and development. Alba also plays a crucial role in the Aluminium Downstream Park, therefore increasing the contribution of non-oil sectors to the GDP of Bahrain. Alba has been recognised for its initiatives to produce Aluminium responsibly through awards such as Top ESG performer in Bahrain by ESG Invest, Safeguard Label from Bureau Veritas and Best Corporate Governance Award by Ethical Boardroom.

Recognised for its environmental practices, social contributions, and corporate governance, Alba launched a comprehensive ESG Roadmap in 2022 focusing on 6 priority areas: (1) Decarbonisation, (2) Green Energy & Aluminium, (3) Circular Economy & Secondary Aluminium, (4) Employee Welfare, (5) Collaboration & Partnership and (6) Transparency, Communications & Due Diligence. Since its inception, Alba has invested into numerous environment, sustainable and socio-economic development projects that have had a positive impact on the society. Alba's first-of-its-kind US\$37.5 million zero-waste Spent Pot Lining Treatment Plant, Power Station 5 Block 4 Project, and the upcoming +6 MW Solar Farm Project are tangible initiatives aligned with Bahrain's Net Zero Carbon Targets by 2060 led by HRH the Crown Prince and Prime Minister of Bahrain.



Read the Company's Full Profile



High-Quality Products

In addition to molten metal, Alba produces a diverse range of superior Value-Added Products (VAP) -- Foundry grade re-melt products (T-Ingots, 10Kg Standard Ingots, 22.5Kg Standard Ingots, and 9.8Kg Properzi Bars), Rolling Ingots (Slabs), Billets, Unalloyed P1020 re-melt products (T-Ingots, 10Kg Standard Ingots, 22.5Kg Standard Ingots, and LME Sows).

Our output – including liquid metal, customised alloys and a variety of surface finishes – goes to the local downstream industries as well as more than 280 global customers through Alba's sales offices in Bahrain, Europe (Zurich), Asia (Singapore) and subsidiary office in the U.S.

Moreover, the Company introduced recently, its new line of low-carbon aluminium products, EternAl.



22Kg Standard Ingots



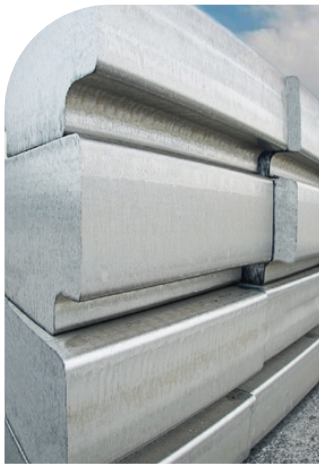
10Kg Standard Ingots



Properzi Ingots



Rolling Slabs



T-Ingots



Billets



LME Sows



EternAl (comes in variety of shapes and forms)

Customer Technical Support

Alba's Customer Technical Support (CTS) provides a spectrum of professional advisory services to 280 customers worldwide.

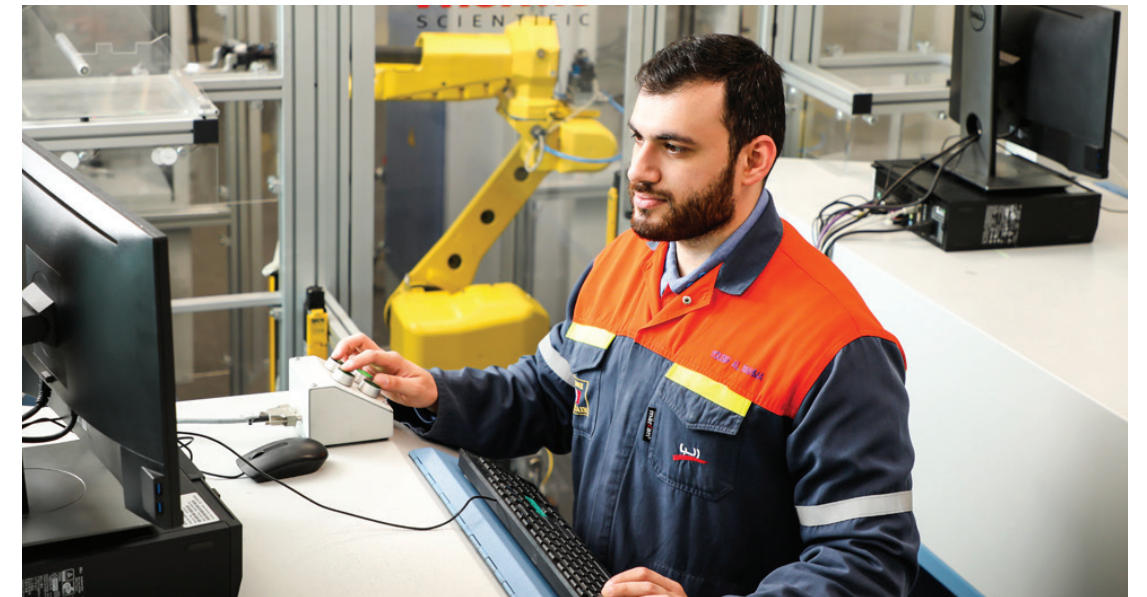
We have an experienced team of specialised professionals and technicians with backgrounds in Metallurgy, Engineering, Product Development and Project Management. To meet our customers' requirements, Alba's CTS team delivers innovative solutions for end-user applications that optimise customer value through combined knowledge, experience, and technical competence.

The dedicated CTS team and Metallurgical Testing Facilities provide product performance analysis capabilities for:

- Optical Emission Spectroscopy
- Optical Microscopy
- Scanning Electron Microscopy
- Alscan
- PoDFa
- LiMCA III
- Homogenisation & Ageing Furnace

We encourage customers to have technical visits to Alba campus as we want to develop production-service connection with our customers for our mutual collaboration on their product performance requirements.

In Alba, Quality is More Than Making Good Aluminium; with our advanced equipment and highly skilled specialists, we ensure our product quality exceeds customer requirements and brings satisfaction.



Alba Laboratory

Product Portfolio

Billets

Our billets are capable of being extruded into a range of profiles from soft to high strength applications and good surface finish for value added finishing applications such as anodising and powder coating. Soft alloy applications include architectural applications, as well as building and kitchen sections. Hard alloys are used in a variety of engineering and transport applications. Additionally, included in our portfolio are billets, suitable for precision tubing applications, as well as billets that are suitable for automotive wheel forging applications. Our billet is packaged and bundled using polyester strapping and heat-treated wood.

Technical Characteristics

Alloys

AA6060	AA6063	AA6463	AA6005
AA1070	AA1050	AA1100	AA3103
AA3003	AA6560	AA6005	AA6101
AA6105	AA6106	AA1080	AA6061
AA6082	AA6351	AA6008	

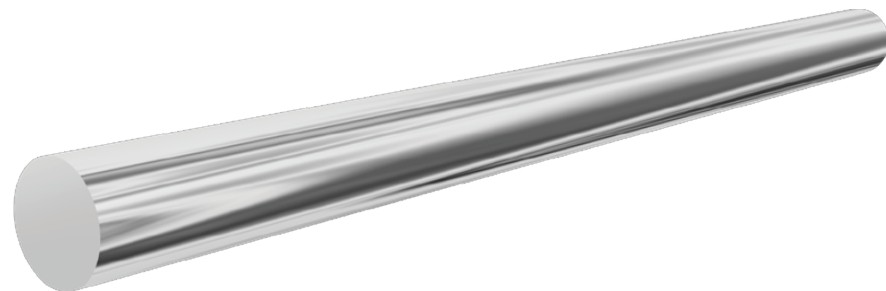
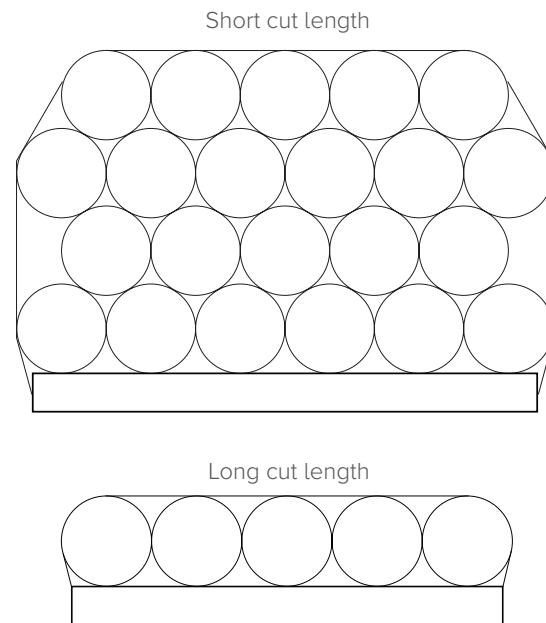
Dimension

Diameter (mm)

152, 178, 203, 216, 229, 254, 305

Length (mm)

500 – 8500



Rolling Ingots (Slabs)

Rolling Slabs are suitable for finished products such as can body, can end, auto body sheet, electric vehicle battery case, air-conditioning fin stock, machined plates, ultra-light gauge foils as well as for cookware foil used for food wrapping. Moreover, it is suitable for lithographic applications used for producing offset printing plates as well as for food packaging, transport industries, construction and general engineering applications including panelling, flooring and roofing among others.

Technical Characteristics

Soft Alloys

AA1070	AA1050	AA1100	AA1145
AA1200	AA1235	AA3003	AA3104
AA8011	AA8021	AA8079	AA8150

Hard Alloys

AA5005	AA5052	AA5754	AA5083
AA5182	AA6022	AA6111	

Dimension

- 1 **Thickness: 400 mm**
Widths (mm): 1050, 1350, 1450, 1490, 1550
Lengths (mm): 4500 to 10000
- 2 **Thickness: 460 mm**
Widths (mm): 1030, 1100, 1200, 1290, 1350, 1500, 1650
Lengths (mm): 4700 to 5000
- 3 **Thickness: 560 mm**
Widths (mm): 1650, 1710, 1750, 1830
Lengths (mm): 4500 to 10000

Notes:

* Fixed mould: for high Mg - alloys AA5182, AA5083

** Vari-mould: for all other alloys

Thickness: 600 mm

Widths (mm): 970, 1030, 1070, 1090, 1110, 1190, 1270, 1330, 1400, 1460, 1500, 1560, 1650, 1736, 1750, 1850, 1950
Lengths (mm): 4500 to 10000

Thickness: 610 mm

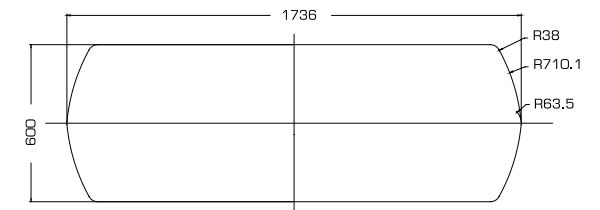
Widths (mm): 2020, 2100, 2200
Lengths (mm): 4500 to 10000

Thickness: 620 mm

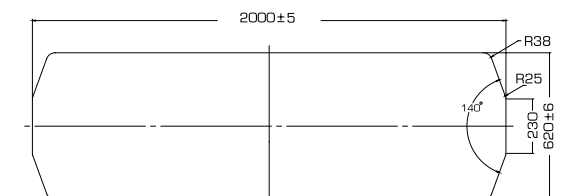
Width (mm): 2000
Lengths (mm): 4500 to 10000

Shape

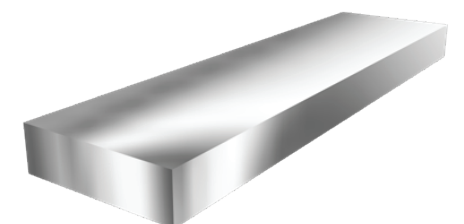
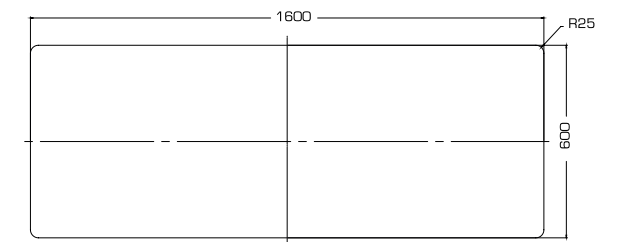
1. Slab round shape of size 600x1736 mm (fixed mould*)



2. Slab 3-flat-edge shape of size 620x2000 mm (fixed mould*)



3. Slab flat-edge shape of size 600x1950 (Fixed mould*) and all other sizes (Vari-moulds**)



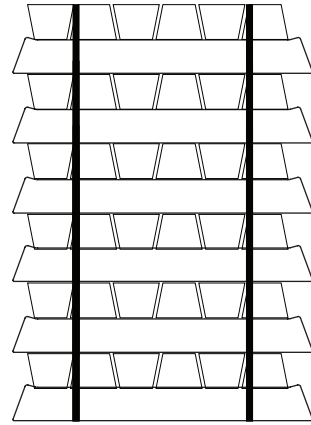
Foundry Alloy Ingots

Foundry alloys are produced using state-of-the-art casting and metal treatment systems, exceeding the most stringent of quality requirements. They are mainly used by the automotive industry for manufacturing high quality wheels and other chassis components.

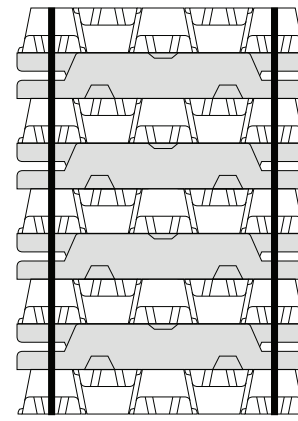
Alloys

- AlSi7Mg (A356.2)
- AlSi11-13
- AlSi10Mn
- AlSi7Mg (Mn, Cu)
- AlSi3

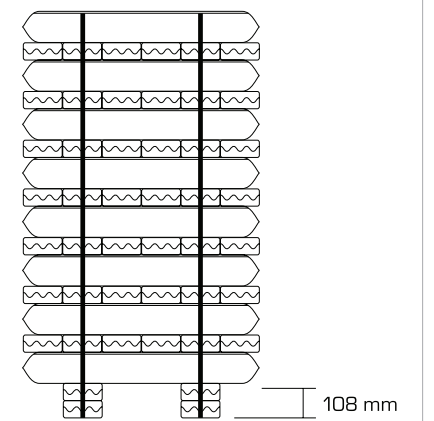
Open Mold 10Kg
Standard Ingots



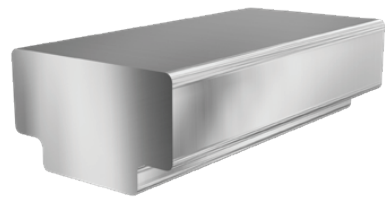
Open Mold 22.5Kg
Standard Ingots



Closed Mold 9.8Kg
Properzi Bars



T-Ingots

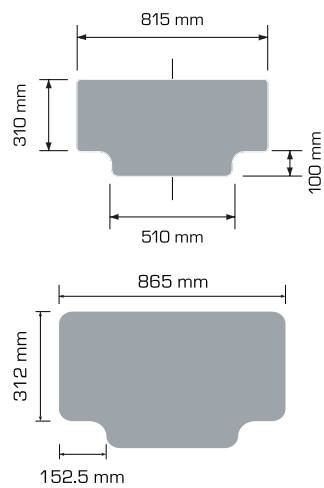


Weight

As per customer requirement

Dimension

815 x 410 mm or
865 x 412 mm
Cut to agreed length



Open Mold 10Kg Standard Ingots

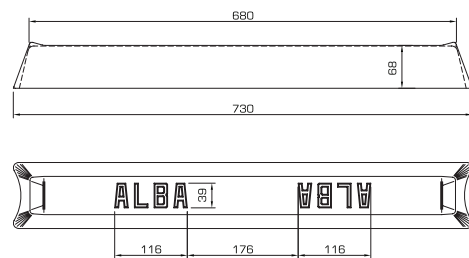


Weight

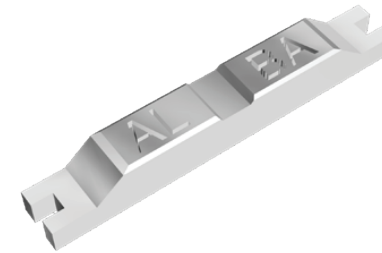
10Kg

Dimension

730 x 105 x 73 mm



Open Mold 22.5Kg Standard Ingots

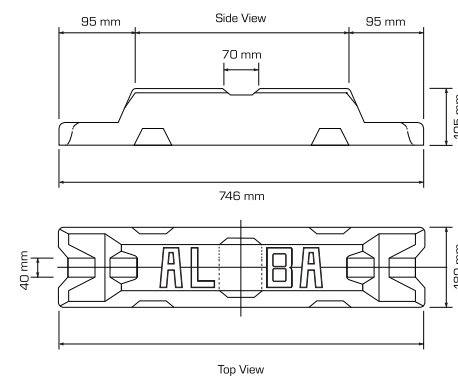


Weight

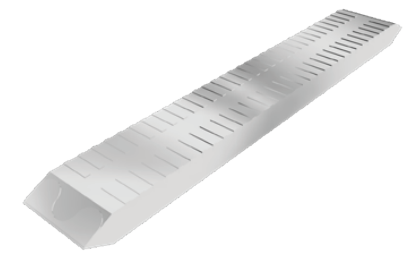
22.5Kg

Dimension

746 x 180 x 105 mm



Closed Mold 9.8Kg Properzi Bars

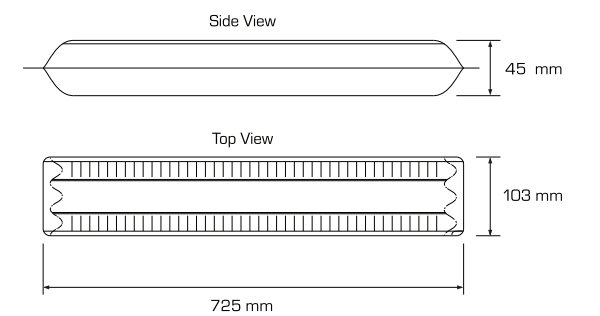


Weight

9.8Kg

Dimension

725 x 103 x 54 mm



Liquid Metal and Primary Ingots

Liquid metal supplied to downstream industries are converted into a range of value-added products such as Electrical conductor rods, cables, aluminium powder and pellets, aluminium alloy ingots, aluminium master alloys and grain refiner products.

Primary ingots are supplied to variety of industries ranging from aviation, transportation, packaging, casting and general purpose applications.

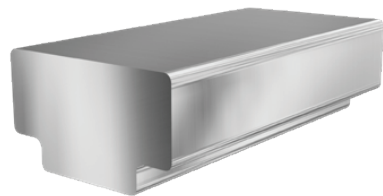
Aluminium Purity Grades

Standard P1020 and HP grades (P0610, P0406, P0404, P0303)



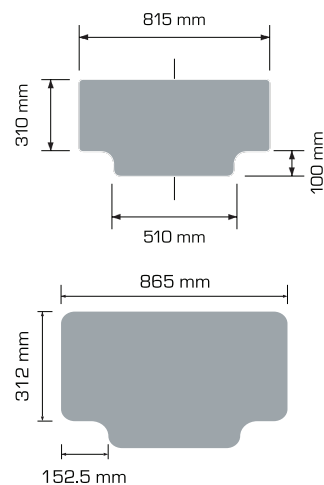
Condition: Skimmed
Crucible Net Weight Options: 5 MT, 11 MT, and 13.5 MT

T-Ingots

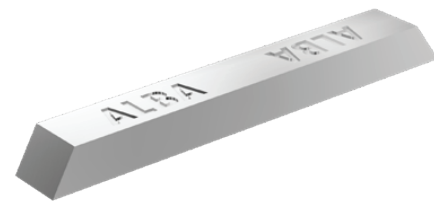


Weight
As per customer requirement

Dimension
815 x 410 mm or
865 x 412 mm
Cut to agreed length

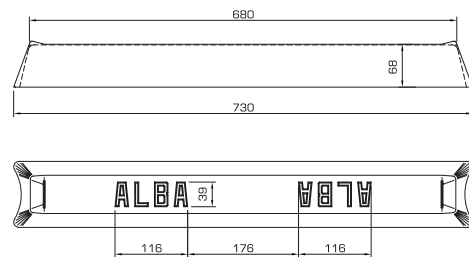


Open Mold 10Kg Standard Ingots



Weight
10Kg

Dimension
730 x 105 x 73 mm



Primary Aluminium Grades

Table # 1: Specifications of alloys

1070.02	SI	FE	CU	MN	MG	CR	NI	ZN	TI	GA	V	AL
Min	0.00	0.00	0.00	0.00	0.00	0.00	0.00	0.00	0.00	0.00	0.00	99.70
Max	0.10	0.20	0.03	0.03	0.03	0.03	0.03	0.03	0.03	0.03	0.03	99.99

1080	SI	FE	CU	MN	MG	CR	NI	ZN	TI	GA	V	AL
Min	0.00	0.00	0.00	0.00	0.00	0.00	0.00	0.00	0.00	0.00	0.00	99.82
Max	0.06	0.10	0.02	0.02	0.02	0.02	0.02	0.02	0.02	0.02	0.02	99.99

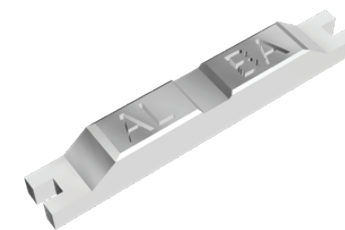
1085	SI	FE	CU	MN	MG	CR	NI	ZN	TI	GA	V	AL
Min	0.00	0.00	0.00	0.00	0.00	0.00	0.00	0.00	0.00	0.00	0.00	99.86
Max	0.04	0.08	0.02	0.02	0.02	0.02	0.02	0.02	0.02	0.02	0.02	99.99

1090	SI	FE	CU	MN	MG	CR	NI	ZN	TI	GA	V	AL
Min	0.00	0.00	0.00	0.00	0.00	0.00	0.00	0.00	0.00	0.00	0.00	99.88
Max	0.04	0.06	0.01	0.01	0.01	0.01	0.01	0.01	0.01	0.01	0.01	99.99

1092	SI	FE	CU	MN	MG	CR	NI	ZN	TI	GA	V	AL
Min	0.00	0.00	0.00	0.00	0.00	0.00	0.00	0.00	0.00	0.00	0.00	99.90
Max	0.04	0.04	0.01	0.01	0.01	0.01	0.01	0.01	0.01	0.01	0.01	99.99

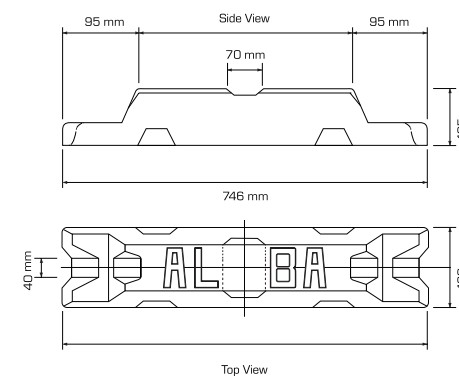
1094	SI	FE	CU	MN	MG	CR	NI	ZN	TI	GA	V	AL
Min	0.00	0.00	0.00	0.00	0.00	0.00	0.00	0.00	0.00	0.00	0.00	99.92
Max	0.03	0.03	0.01	0.01	0.01	0.01	0.01	0.01	0.01	0.01	0.01	99.99

Open Mold 22.5Kg Standard Ingots



Weight
22.5Kg

Dimension
746 x 180 x 105 mm

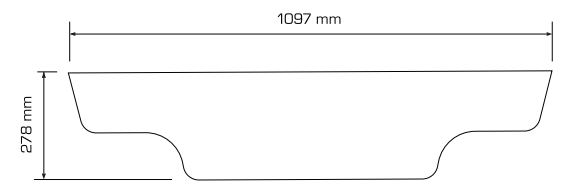


750Kg Low Profile Sows



Weight
750Kg

Dimension
1097 x 1097 x 278 mm



The Future is Recycled: Alba's EternAl for Global Markets

Our new, low-carbon aluminium product line, EternAl, underlines our dedication to promoting responsible production practices throughout the aluminium value chain.

Aligned with our ESG Roadmap, the EternAl product embodies our commitment to a 'Circular Economy & Secondary Aluminium', while supporting our customers in achieving their sustainability goals and reducing their environmental footprint.

This innovative product range includes two initial variants: **EternAl-30** and **EternAl-15**, which incorporates 30% and 15% recycled content, respectively, catering directly to the increasing global demand for eco-friendly aluminium solutions.

Ensuring the highest standards of quality and sustainability, both EternAl product variants have been independently verified by DNV, a world leader in assurance and certification. This verification reassures our customers of the significant emission reductions achieved through these innovative products.

Embrace the future with Alba's EternAl – where innovation meets sustainability.

First batch verified by:



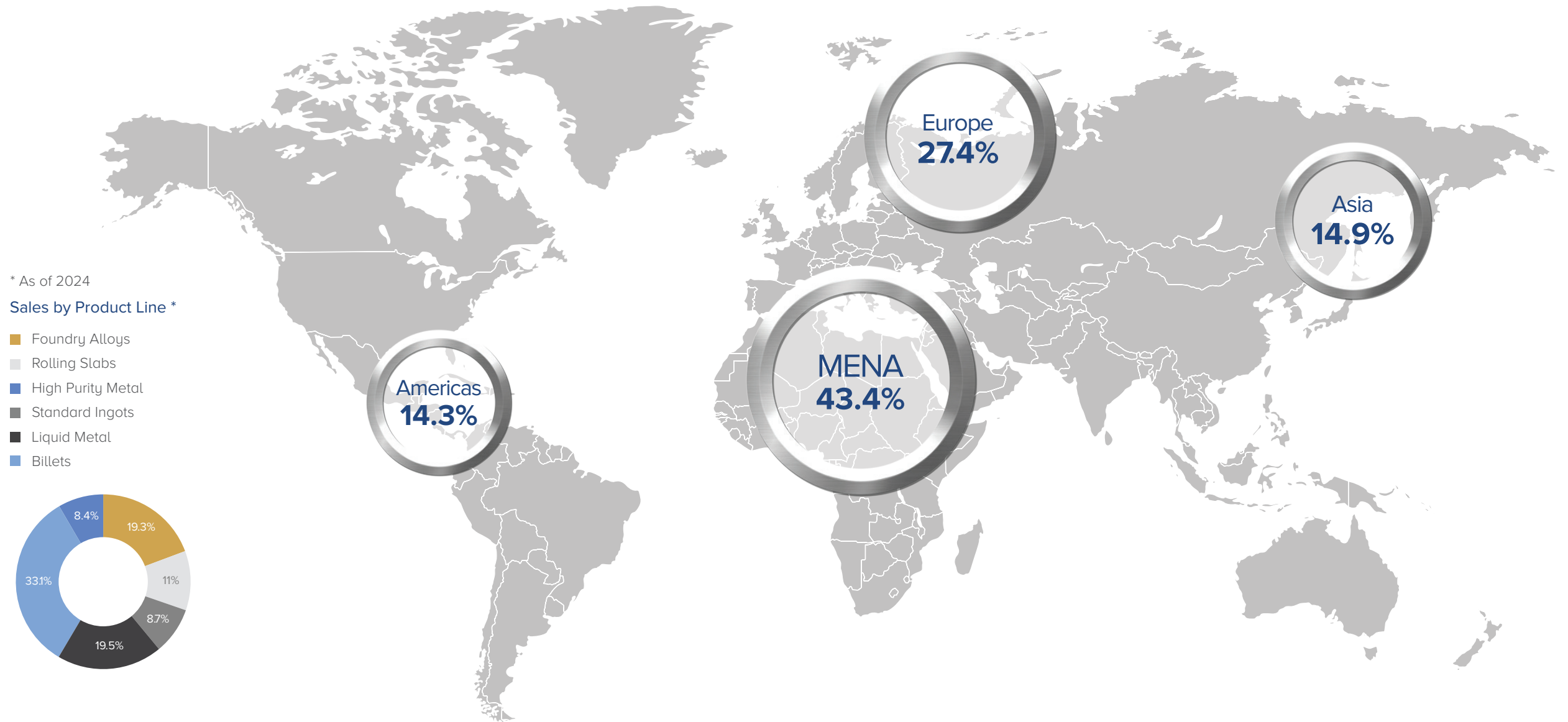
eternAl



Read our
2022 ESG Report



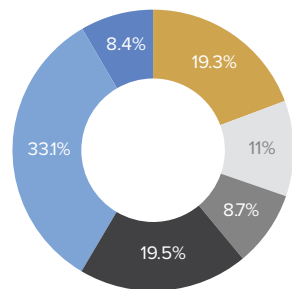
Global Presence*



* As of 2024

Sales by Product Line *

- Foundry Alloys
- Rolling Slabs
- High Purity Metal
- Standard Ingots
- Liquid Metal
- Billets



Headquarters

Bahrain -- 150, King Hamad Hwy, Askar 951
 3.30 AM to 12 PM (GMT), Sunday to Thursday
 Telephone: +973 1783 7496

Sales Offices

Switzerland -- Theaterstrasse 17, 8400 Winterthur
 7 AM to 4 PM (GMT), Monday to Friday
 Telephone: +41 52 208 0391

Singapore -- #17-04, The Gateway East, 152 Beach Road, 189820
 1.30 AM to 9.30 AM (GMT), Monday to Friday
 Telephone: +65 9668 8022

Subsidiary

The U.S. (Subsidiary Company) -- 1175 Peachtree Street NE, Suite 1475, Atlanta, GA 30361
 12 PM to 9 PM (GMT), Monday to Friday
 Telephone: +1 404 921 2506

72%
Value Added Sales

50+
Countries

280+
Customers

Our Certifications

We are the proud recipient of several globally-recognised certifications that attest to Alba's commitment to produce responsibly and sustainably.



*The year refers to when Alba has received the certification for the first time

Alba's Marketing Management Team



Hisham Alkooheji
Chief Marketing Officer
+973 1783 7600
Alkooheji@alba.com.bh



A. Rasool Ahmed
Director Casthouse & Customer Technical Support
+973 1783 5252
arasoolahmed@alba.com.bh



Patrick Hudson
Manager Sales – Alba Americas (a subsidiary of Alba)
+1 404 921 2506
patrick@alba-americas.com



Enoch Kwok Yee Lok
Manager Sales Asia Pacific
+65 9668 8022
Enoch.Kwok@alba.com.bh



Artem Tatarunis
Manager Sales Europe
+41 52 208 0391
Artem.Tatarunis@alba.com.bh



Mohammed Al-Awadhi
Manager Sales MENA
+973 1783 7496
Mohammed.Alawadhi@alba.com.bh



Hussain Faqih
Manager Customer Technical Support
+973 1783 5222
Hussainamin.Faqihi@alba.com.bh



Mudassir Hassan Siddiqui
Senior Manager Customer Services & Marketing Operations
+973 1783 7802
mudassir.siddiqui@alba.com.bh



Shoji Takeuchi
Senior Head of Sales Asia Pacific
+65 8483 8182
shoji.takeuchi@alba.com.bh



MADE IN
BAHRAIN



f @Alba4world
@Aluminium-Bahrain
www.albasmelter.com