



Aluminium
for the world

Product Brochure

Pioneering the 'Metal of The Future'



Contents

04	•	CEO Message
05	•	CMO Message
07	•	Our Company
08	•	High-Quality Products
09	•	Customer Technical Support
10	•	Product Portfolio
		Extrusion Ingots (Billets)
		Rolling Ingots (Slabs)
		Foundry Alloy Ingots
		Liquid Metal and Primary Ingots
16	•	Our Certifications
17	•	Responsible Production
18	•	Global Presence
20	•	Contact Us



Message from the CEO

ALI AL BAQALI



As we start our 52nd year of commercial operations, I would like to thank all our customers who have chosen Alba to be their supplier of choice over the last 5 decades -- together we have delivered, and I also look forward to welcoming new clientele to Alba's portfolio.

Alba's exemplary journey is rooted in its five decades of expertise, nimble workforce, unrelentless drive for operational excellence as well as strong Safety and ESG performance. We are proud to be an inspiring force for other industries in Bahrain, and we hope to continue paving a stronger path for the future. As a responsible Company, we remain true to our primary mission: go above and beyond to foster value-creation in everything we do.

Communicating what we do is what makes us strong and reporting on our ESG performance is our way of sharing with our stakeholders what really matters for Alba (please visit our website to know more about Alba's journey in Sustainability).

Today, I am proud to say that we, at Alba, want to be part of the ESG change we want to see in the world, and this can only be done by partnering with our customers.

Stay safe and well.



“
At Alba, we want to be part of
the ESG change we want to
see in the world.”

Message from the CMO

KHALID A. LATIF



I am delighted to introduce our new product brochure where we give you a glimpse of our diverse product-portfolio.

We are extremely proud of the ties which we have developed with our customers worldwide over the last +50 years; and with a global footprint spanning across 50 countries, we are pleased to be your supplier of choice.

Our products' spectrum is used in a range of applications including cans, autobody sheet, air-conditioning, automotive wheels, building & construction amongst many others.

At Alba, we will always go above and beyond to deliver value to the world. Our logistics tie-ups help us deliver your products on time wherever you are. We run a 24-hour, 7-days-a-week operation with Safety being a top priority in everything we do.

We are as good as our customers.
Thank you for choosing Alba.



“
We run a 24-hour,
7-days-a-week operation with Safety
being a top priority.”



Our Company

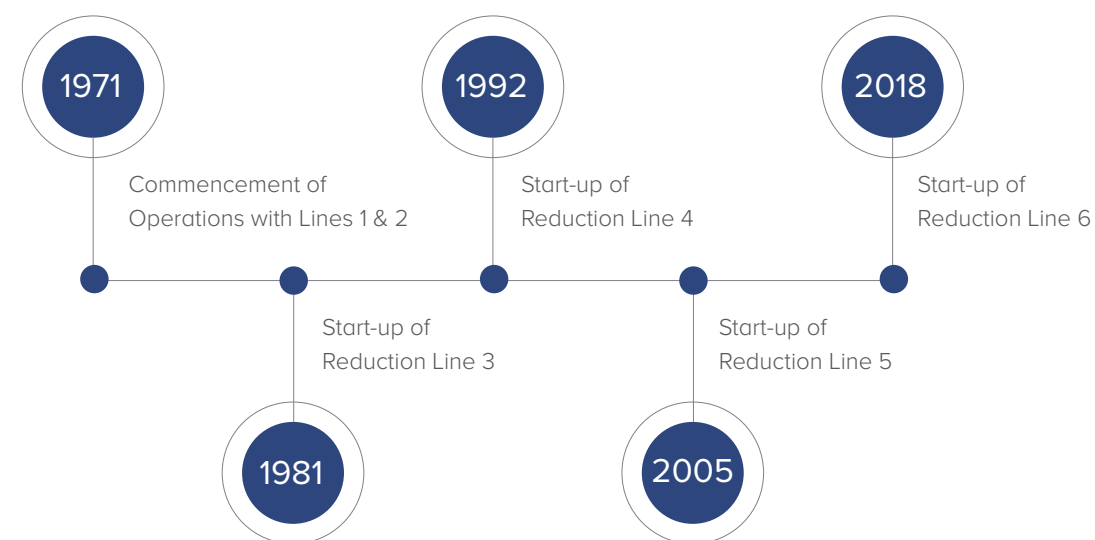
The World's Largest Aluminium Smelter Ex-China

Starting as a 120,000 metric tonnes per annum smelter in 1971, Aluminium Bahrain B.S.C. (Alba), today, is the world's largest aluminium smelter Ex-China with a production of more than 1.6 million metric tonnes per annum. Alba is dual listed on Bahrain Bourse and London Stock Exchange and its shareholders are Bahrain Mumtalakat Holding Company B.S.C. © (69.38%), SABIC Industrial Investments Company (SIIC) (20.62%) and General Public (10%).

The Alba Campus comprises six Reduction Lines, three Power Stations, four Casthouses, four Carbon Plants along with other ancillary facilities. In addition to primary aluminium production, we also produce 550,000 mtpa of high-quality calcined petroleum coke at our own dedicated Coke Calcining Plant.

Moreover, globally-recognised certifications such as ISO 9001, ISO 14001, ISO 27001, ISO 45001, IATF 16949:2016, ASI Performance Standard Certification and Ecovadis attest to Alba's commitment to produce aluminium responsibly and sustainably.

Alba is recognised as one of the top industrial companies in the world with high standards in Environment practices, Social contribution and Corporate Governance. Over +50 years, the Company has invested into projects that have had a positive impact on the society in which it operates. More recently, Alba's US\$ 37.5 million zero-waste Spent Pot Lining Treatment Plant, the upcoming plus-5 MW Solar Farm Project, Alba's Power Station 5 Block 4 Project and strategic role in the future Aluminium Downstream Park are a testimony of Alba's Sustainability Roadmap that will meet the goals of Bahrain's Economic Vision 2030 as well as the Net Zero Carbon targets led by HRH the Crown Prince and Prime Minister of Bahrain Prince Salman bin Hamad Al Khalifa in COP26 summit.



High-Quality Products

In addition to molten metal, Alba produces a diverse range of superior Value-Added Products (VAP)-- Foundry grade re-melt products (T-Ingots, 10 Kg Standard Ingots, 22.5 Kg Standard Ingots, and 9.8 Kg Properzi Bars), Rolling Ingots (Slabs), Extrusion Ingots (Billets), Unalloyed P1020 re-melt products (T-Ingots, 10 Kg Standard Ingots, 22.5 Kg Standard Ingots, and Sows).

Our output – including liquid metal, customised alloys and a variety of surface finishes – goes to the local downstream industries as well as more than 240 global customers through Alba's sales offices in Bahrain, Europe (Zurich), Asia (Singapore) and subsidiary office in the U.S.



22Kg Standard Ingots



10Kg Standard Ingots



Properzi Ingots



T-Ingots



Extrusion Ingots (Billets)



Rolling Slabs

Customer Technical Support

Alba's Customer Technical Support provides a spectrum of professional advisory services to +240 customers worldwide.

We have an experienced team of specialised professionals and technicians with backgrounds in Metallurgy, Engineering, Product Development and Project Management. To meet our customers' requirements, Alba Technical Services team delivers innovative solutions for end-user applications that optimise customer value through combined knowledge, experience, and technical competence.

The dedicated Customer Technical Support team and Metallurgical Testing Facilities provide product performance analysis capabilities for:

- Optical Emission Spectroscopy
- Optical Microscopy
- Scanning Electron Microscopy
- Alscan
- PoDFa
- LiMCA III
- Homogenisation & Ageing Furnace

We encourage customers to have technical visits to Alba campus as we want to develop production-service connection with our customers for our mutual collaboration on their product performance requirements.

In Alba, Quality is More Than Making a Good Aluminium; with our advanced equipment and highly skilled specialists, we ensure our product quality exceeds customer requirements and brings satisfaction.



Alba Laboratory

Product Portfolio

Extrusion Ingots (Billets)

Our Extrusion Ingots are capable of being extruded into a range of profiles from soft to high strength applications and good surface finish for value added finishing applications such as anodising and powder coating. Soft alloy applications include architectural applications, as well as building and kitchen sections. Hard alloys are used in a variety of engineering and transport applications. Additionally, included in our portfolio are extrusion ingots, suitable for precision tubing applications, as well as billets that are suitable for automotive wheel forging applications. Our billet is packaged and bundled using polyester strapping and heat-treated wood.

Technical Characteristics

Soft Alloys

AA6060	AA6063	AA6463	AA6005
AA1070	AA1050	AA1100	AA3103
AA3003	AA6560		

Hard Alloys

AA6061	AA6082	AA6351	AA6008
--------	--------	--------	--------

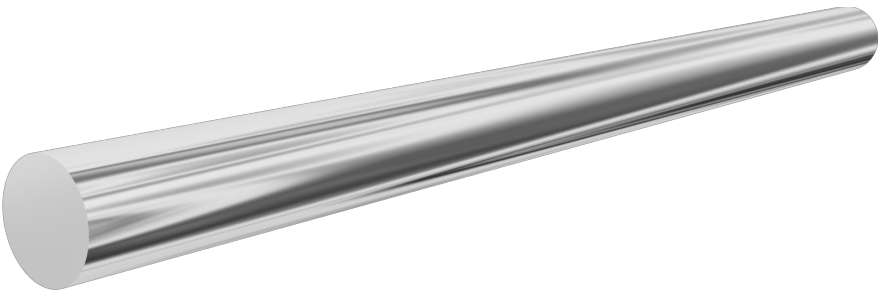
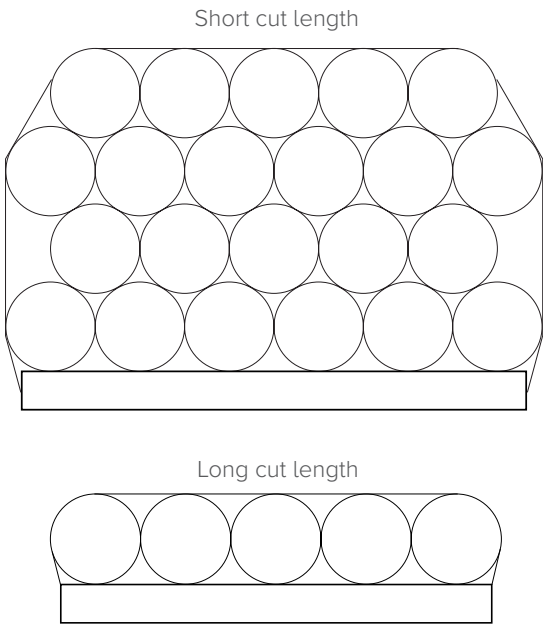
Dimension

Diameter (mm)

152, 178, 203, 216, 229, 254, 305

Length (mm)

400 – 8500



Rolling Ingots (Slabs)

Rolling Slabs are suitable for finished products such as can body, can end, auto body sheet, electric vehicle battery case, air-conditioning fin stock, machined plates, ultra-light gauge foils as well as for cookware foil used for food wrapping. Moreover, it is suitable for lithographic applications used for producing offset printing plates as well as for food packaging, transport industries, construction and general engineering applications including panelling, flooring and roofing among others.

Technical Characteristics

Soft Alloys

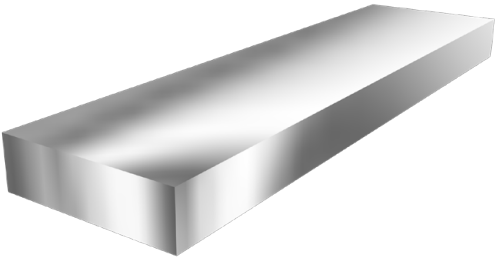
AA1070	AA1050	AA1100	AA1145
AA1200	AA1235	AA3003	AA3104
AA8011	AA8021	AA8079	AA8150

Hard Alloys

AA5005	AA5052	AA5754	AA5083
AA5182	AA6022	AA6111	

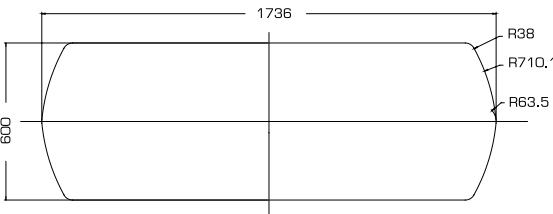
Dimension

- 1 Thickness: 400 mm
- 2 Thickness: 460 mm
- 3 Thickness: 560 mm
- 4 Thickness: 600 mm
- 5 Thickness: 610 mm
- 6 Thickness: 620 mm

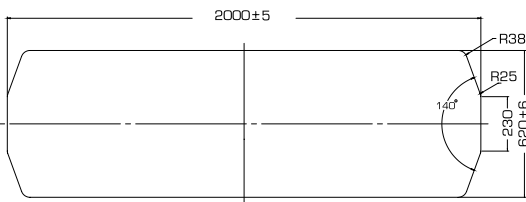


- 1 Widths (mm): 1050, 1350, 1450, 1490, 1550
Lengths (mm): 4500 to 10000
- 2 Widths (mm): 1030, 1100, 1200, 1290, 1350, 1500, 1650
Lengths (mm): 4700 to 5000
- 3 Widths (mm): 1650, 1710, 1750, 1830
Lengths (mm): 4500 to 10000
- 4 Widths (mm): 970, 1030, 1070, 1090, 1110, 1190, 1270, 1330, 1400, 1460, 1500, 1560, 1600, 1736
Lengths (mm): 4500 to 10000
- 5 Widths (mm): 2020, 2100, 2200
Lengths (mm): 4500 to 10000
- 6 Width (mm): 2000
Lengths (mm): 4500 to 10000

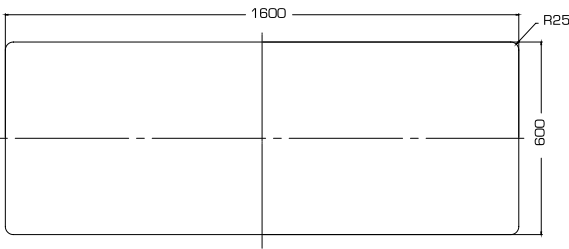
1. Slab shape (except 600x1736mm & 620x2000mm)



2. Slab shape for size 600x1736mm



3. Slab shape for size 620x2000mm

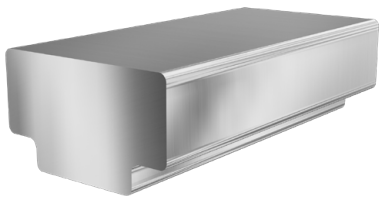


Foundry Alloy Ingots

Foundry alloys are produced using state-of-the-art casting and metal treatment systems, exceeding the most stringent of quality requirements. They are mainly used by the automotive industry for manufacturing high quality wheels and other chassis components.

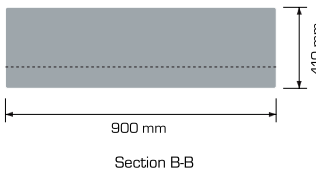
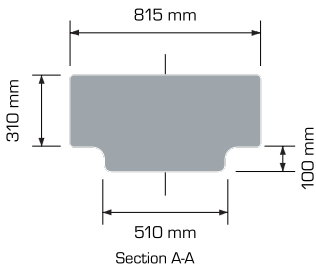
- Alloys**
- AlSi7Mg (A356.2)
 - AlSi11
 - AlSi10Mn
 - AlSi7Mg (Mn, Cu)
 - AlSi3

T-Ingots

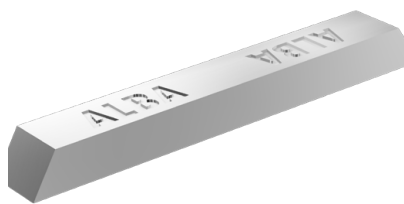


Weight
As per customer requirement

Dimension
815 x 410 mm or
865 x 412 mm
Cut to agreed length

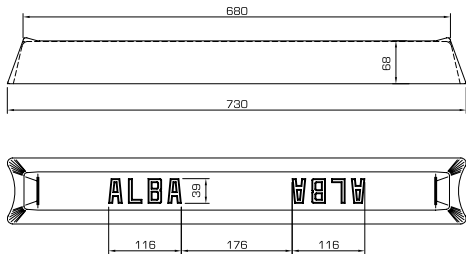


Open Mold 10kg Standard Ingots

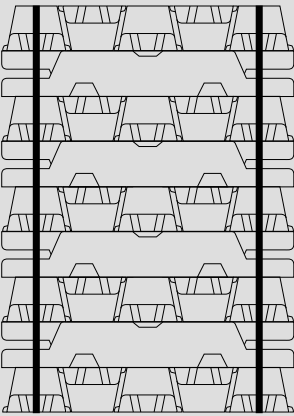


Weight
10KG

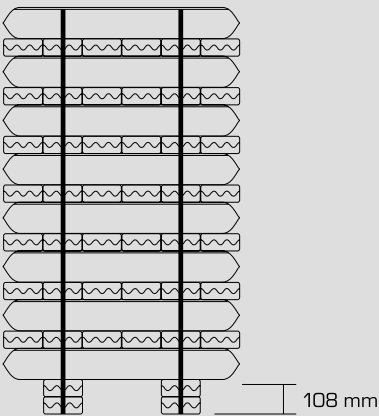
Dimension
730 x 105 x 73 mm packed in
bundles of 93 or 65 ingots



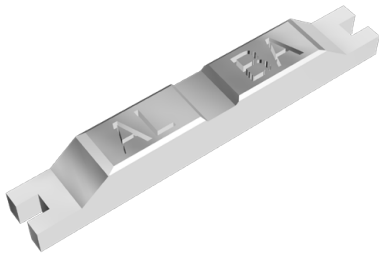
Open Mold 22.5Kg
Standard Ingots



Closed Mold 9.8kg
Properzi Bars

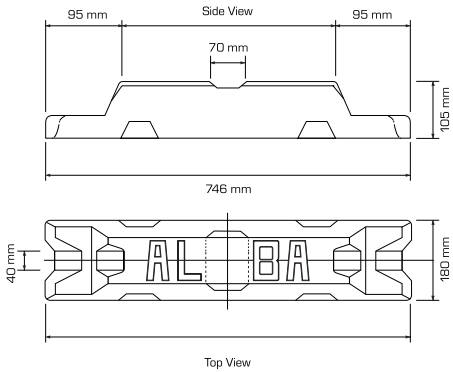


Open Mold 22.5kg Standard Ingots

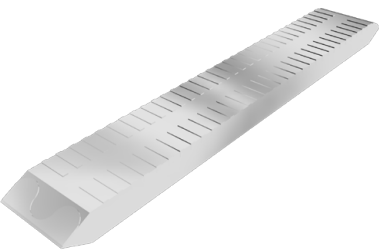


Weight
22.5KG

Dimension
746 x 180 x 105 mm packed in
bundles of 44 or 54 ingots

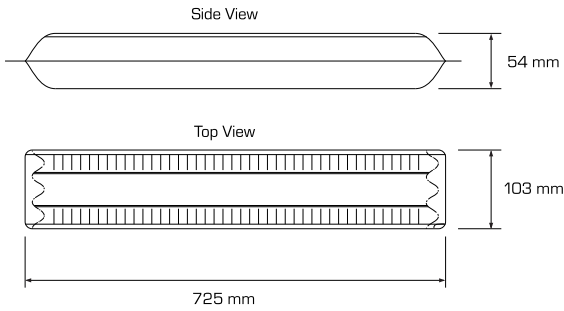


Closed Mold 9.8kg Properzi Bars



Weight
9.8 Kg

Dimension
725 x 103 x 54 mm packed in
bundles of 109 ingots



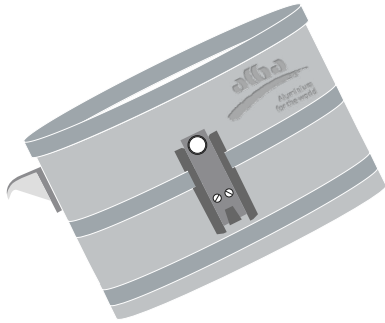
Liquid Metal and Primary Ingots

Liquid metal supplied to downstream industries are converted into a range of value-added products such as Electrical conductor rods, cables, aluminium powder and pellets, aluminium alloy ingots, aluminium master alloys and grain refiner products.

Primary ingots are supplied to variety of industries ranging from aviation, transportation, packaging, casting and general purpose applications.

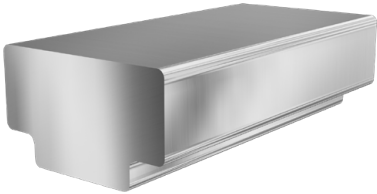
Aluminium Purity Grades

Standard P1020 and HP grades (P0610, P0406, P0404)



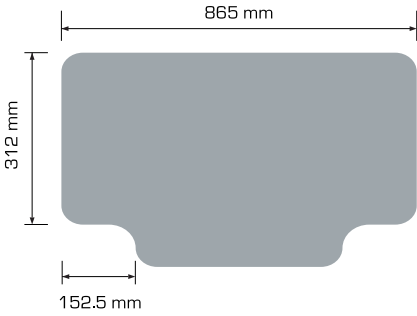
Condition: Skimmed
Crucible Net Weight Options: 5 MT, 11 MT, and 13.5 MT

T-Ingots

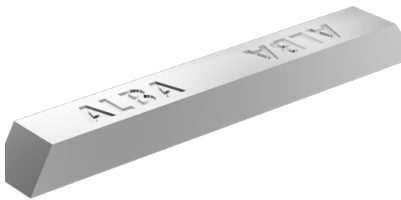


Weight
As per customer requirement

Dimension
815 x 410 mm or
865 x 412 mm
Cut to agreed length

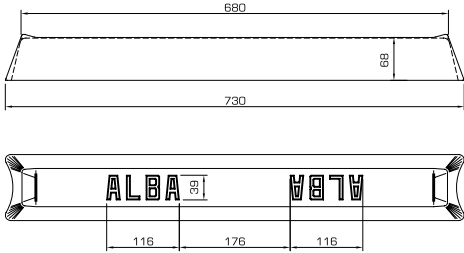


Open Mold 10kg Standard Ingots



Weight
10KG

Dimension
730 x 105 x 73 mm packed in
bundles of 93 or 65 ingots



Primary Aluminium Grades

Table # 1: Specifications of alloys

1070.02	SI	FE	CU	MN	MG	CR	NI	ZN	TI	GA	V	AL
Min	0.00	0.00	0.00	0.00	0.00	0.00	0.00	0.00	0.00	0.00	0.00	99.70
Max	0.10	0.20	0.03	0.03	0.03	0.03	0.03	0.03	0.03	0.03	0.03	99.99

1080	SI	FE	CU	MN	MG	CR	NI	ZN	TI	GA	V	AL
Min	0.00	0.00	0.00	0.00	0.00	0.00	0.00	0.00	0.00	0.00	0.00	99.82
Max	0.06	0.10	0.02	0.02	0.02	0.02	0.02	0.02	0.02	0.02	0.02	99.99

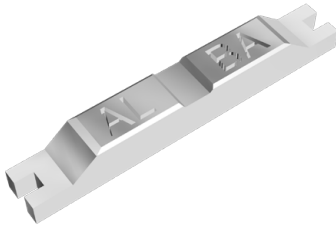
1085	SI	FE	CU	MN	MG	CR	NI	ZN	TI	GA	V	AL
Min	0.00	0.00	0.00	0.00	0.00	0.00	0.00	0.00	0.00	0.00	0.00	99.86
Max	0.04	0.08	0.02	0.02	0.02	0.02	0.02	0.02	0.02	0.02	0.02	99.99

1090	SI	FE	CU	MN	MG	CR	NI	ZN	TI	GA	V	AL
Min	0.00	0.00	0.00	0.00	0.00	0.00	0.00	0.00	0.00	0.00	0.00	99.88
Max	0.04	0.06	0.01	0.01	0.01	0.01	0.01	0.01	0.01	0.01	0.01	99.99

1092	SI	FE	CU	MN	MG	CR	NI	ZN	TI	GA	V	AL
Min	0.00	0.00	0.00	0.00	0.00	0.00	0.00	0.00	0.00	0.00	0.00	99.90
Max	0.04	0.04	0.01	0.01	0.01	0.01	0.01	0.01	0.01	0.01	0.01	99.99

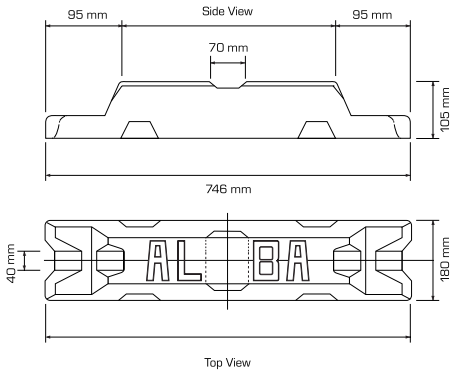
1094	SI	FE	CU	MN	MG	CR	NI	ZN	TI	GA	V	AL
Min	0.00	0.00	0.00	0.00	0.00	0.00	0.00	0.00	0.00	0.00	0.00	99.92
Max	0.03	0.03	0.01	0.01	0.01	0.01	0.01	0.01	0.01	0.01	0.01	99.99

Open Mold 22.5kg Standard Ingots



Weight
22.5KG

Dimension
746 x 180 x 105 mm packed in
bundles of 44 or 54 ingots

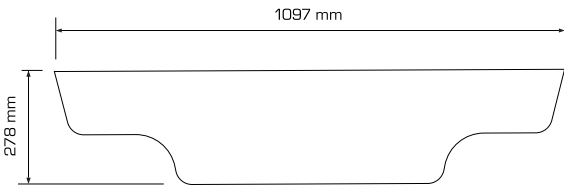


750kg Low Profile Sows



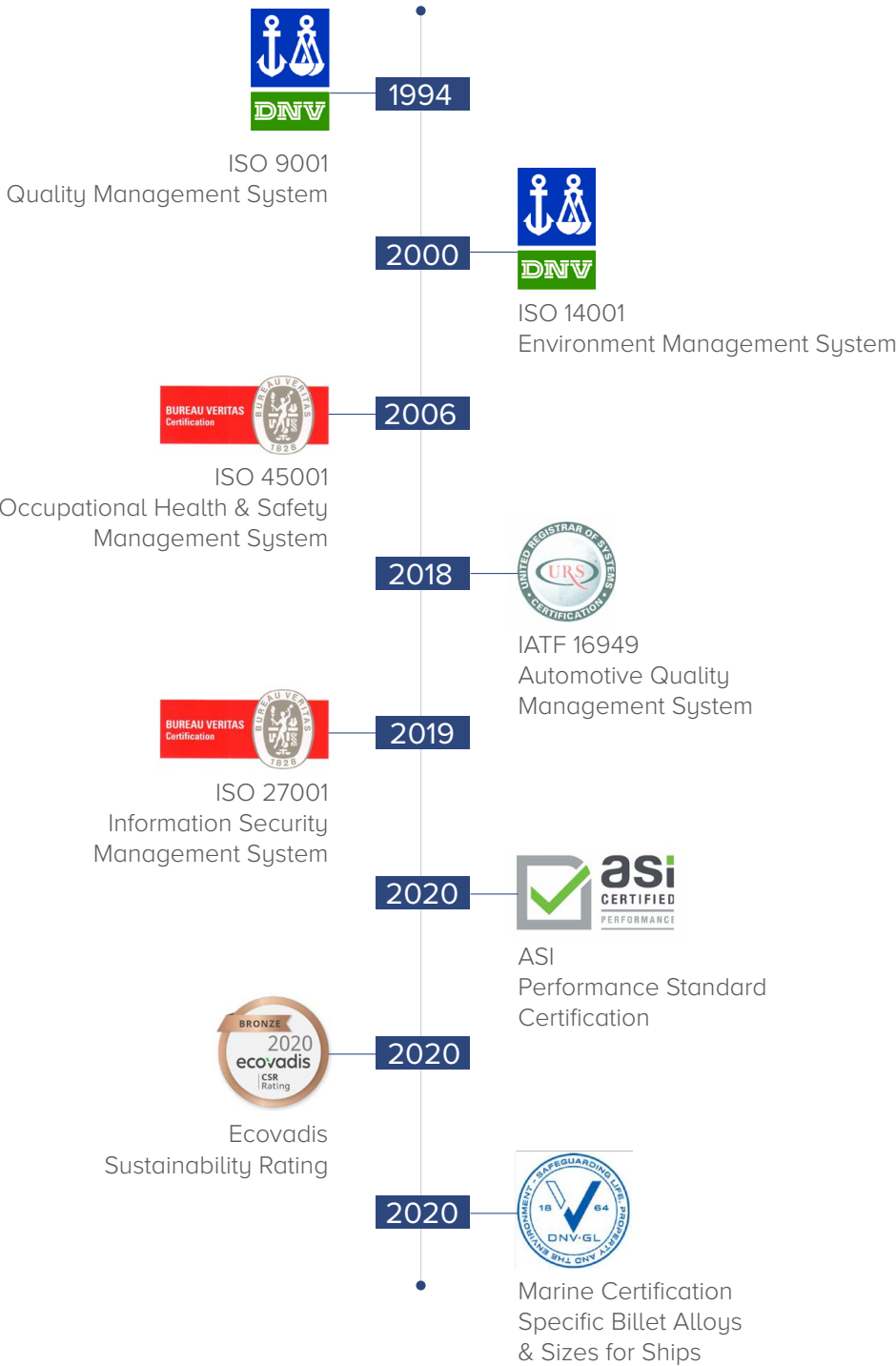
Weight
750 Kg

Dimension
1097 x 1097 x 278 mm



Our Certifications

We are the proud recipient of several globally-recognised certifications that attest to Alba's commitment to produce responsibly and sustainably.



*The year refers to when Alba has received the certification for the first time

Responsible Production

*as per Alba's latest Sustainability Report

BHD 8.1m
in environmental
conservation projects

3.7%
drop in SOx
intensity (YoY)

BHD 762K
Community
Investments

0.5%
reduction in GHG
emissions intensity (YoY)

Zero
Incidents of
Corruption, LTIs and
Security Breaches

Zero
oil spills

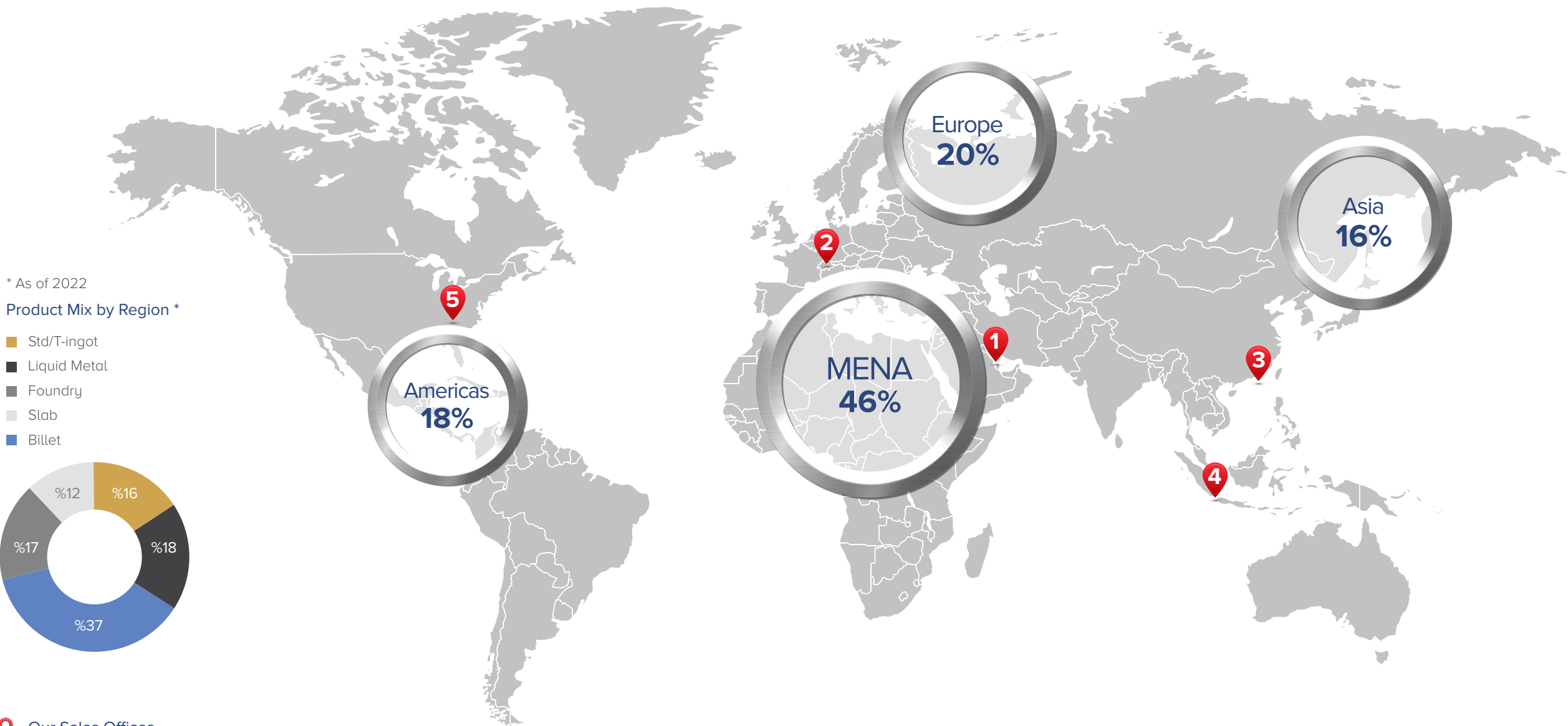
32%
reductions in
hazardous waste
generation (YoY)



For more info read our
2021 Sustainability Report



Global Presence*



- 1 Bahrain -- 150, King Hamad Hwy, Askar 951
3.30 AM to 12 PM (GMT), Sunday to Thursday
- 2 Switzerland -- Theaterstrasse 17, 8400 Winterthur
7 AM to 4 PM (GMT), Monday to Friday
- 3 Singapore -- #17-04, The Gateway East, 152 Beach Road, 189820
1.30 AM to 9.30 AM (GMT), Monday to Friday
- 4 The U.S. (Subsidiary Company) -- 1175 Peachtree Street NE, Suite 1475, Atlanta, GA 30361
12 PM to 9 PM (GMT), Monday to Friday

66%
Value Added Sales

50+
Countries

240+
Customers

Contact Us



Khalid A. Latif
Chief Marketing Officer
+973 1783 7600
Khalid.Alatif@alba.com.bh



Hisham Alkooheji
Director Marketing
MEA - Asia
+973 1783 7380
Alkooheji@alba.com.bh



Boris Santosi
Director Global Export Sales
+41 52 208 0392
Boris.Santosi@alba.com.bh



Clint McLachlan
Director OPEX & Technical
Support
+973 17837277
ClintMcl@alba.com.bh



Enoch Kwok Yee Lok
Manager Sales Asia Pacific
+65 9668 8022
Enoch.Kwok@alba.com.bh



Fatema Al-Mohri
Manager Sales MENA
+973 1783 5774
Fatema.AIMohri@alba.com.bh



Hussain Faqihi
Manager Customer Technical
Support
+973 17835222
Hussainamin.Faqihi@alba.com.bh



www.albasmelter.com